



1/3 Aranda Place Epping VIC

2 2 2

Step into modern comfort with this beautifully presented two-bedroom, two-bathroom home, thoughtfully designed over two well-planned levels. Perfectly positioned for convenience, this home places you just minutes from local shops, cafes, supermarkets, parklands, and multiple transport options.

Type : Townhouse

Price : \$ 541,000

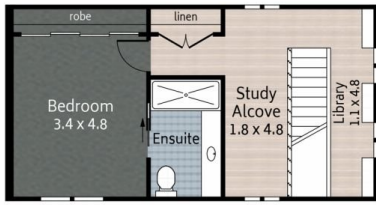
View : <https://www.fnsouthmorang.com.au/sale/vic/north/epping/residential/townhouse/8156861>

The ground floor boasts an inviting open-plan kitchen and living area, fully renovated with polished concrete floors and a sleek, stone-finished kitchen featuring quality stainless steel appliances. This space seamlessly extends through sliding doors to a low-maintenance courtyard, where you can entertain or unwind amidst lush, established plants-your own private oasis.

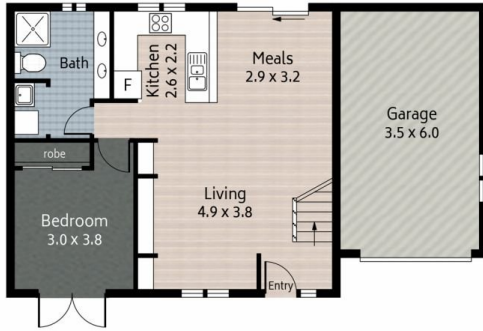
[For full version visit the website](#)



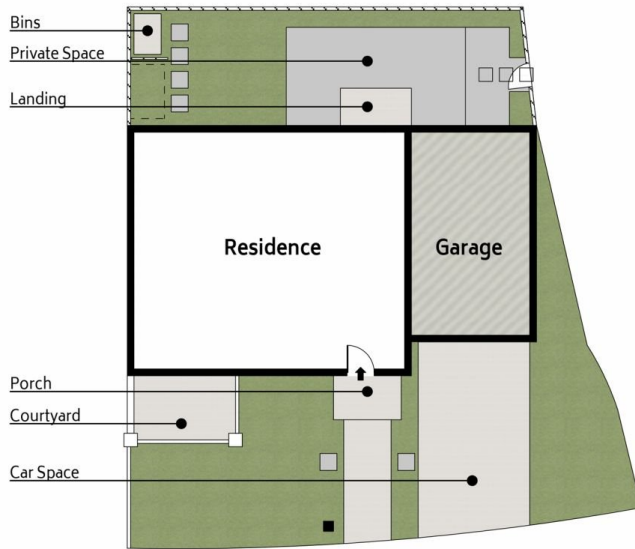
Justin Sciola
03 8804 5888



//FLOOR PLAN/First Floor



//FLOOR PLAN/Ground Floor



//SITE PLAN

2 Bed

2 Bath

1 Car

Please note: This floor plan has been produced for marketing purposes and should be used as a guide only. All measurements are approximate and any person using this information should rely on their own enquiries.

Produced by MAISONSNAP.COM.AU